



Dear Millersville University community,

Welcome back to the start of the Spring 2023 semester. I am impressed that our campus has sprung back to life with renewed energy and excitement within a short time.

During the holidays, I represented Millersville University on two international trips to Ghana and India. Both trips provided opportunities to build strong relationships with higher education institutions seeking to partner with our University. Last month, I visited the Vice-Chancellor (equivalent to university president) of the University of Cape Coast to solidify plans for upcoming academic partnerships. Earlier this month, I traveled to India as a member of a PASSHE delegation invited by the Karnataka State Higher Education Council. Karnataka is a state in the southwestern region of India. During this trip, I signed a letter of intent to explore academic partnerships with Visvesvaraya Technological University, the highest-ranked engineering university in the state, with an enrollment of about 400,000 students. Since my return, the Provost and I have started discussing how these new partnerships would develop and positively impact our campus community.

With the international travel behind me, I look forward to celebrating the 5th anniversary of the Intercultural Center for Student Engagement today, Monday, Jan. 30, with an Open House from noon – 2 p.m. The Center was named in honor of the late Dr. Rita Smith-Wade-El, our beloved faculty colleague and lifelong champion for social justice.

In March, the President's Commission on the Status of Women will hold two events to celebrate International Women's Day. On March 2, there will be a student celebration in the SMC, and on March 8, the annual International Women's Day Theodora Talks will be held at the Ware Center.

In this edition of my newsletter, you can read more about the progress of our Open Educational Resources initiative. As described in direction 1 of our Strategic Plan, providing access and affordability are two of our top priorities. Using OER contributes to accomplishing this goal by decreasing the cost of textbooks for our students. Likewise, new dual enrollment opportunities provide access to future college-bound students, and you can learn more

"Because of our years of work with OER, Millersville faculty were uniquely situated to apply for and earn these grants."

Several faculty members have published OER materials themselves. The Vilas A. Prabhu Center for Academic Excellence continues to launch other initiatives to support the adoption of OER, in addition to helping faculty publish, create and share student-centered course materials, syllabi and assignments. Providing workshops and training encourages other faculty members to adopt OER and improve how they utilize the resources in the classroom.

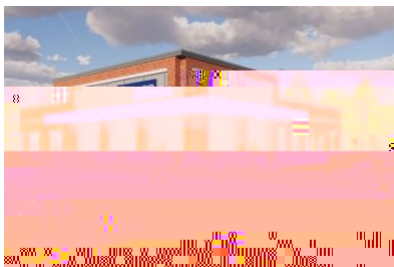
PowerPoint presentation to present in front of their peers and a panel of alumni judges. The winning team was picked based on preparedness and was congratulated with a prize.

There are two classes the students take in the program. The first class teaches the basics of entrepreneurship and how to apply it to create a business and business plan from scratch. The second is a hands-on course where students take their knowledge from the first class and apply it to social entrepreneurship. Here, students work in teams to develop a community symposium event. Last year, the symposium event shed light on how businesses got through the COVID-19 pandemic. McGrath notes that students gain much from the two classes, including team-building skills, collaboration, communication and dealing with change and conflict.

McGrath explains how beneficial the program will be to the students in their future college careers. "Students will learn firsthand what a college course is all about and then apply this knowledge after taking my class to start a business in the future. Even if they do not plan to start their own business, they know how to start a small hobby. They learn marketing, finance, accounting, leadership and management skills. Individuals become independent and channel their creativity into creating something of their own in this competitive world."

Millersville University currently has 24 dual enrollment partnerships with local high schools.

NEW MEDICAL SERVICES BUILDING ADJACENT TO CAMPUS



Student Lodging, Inc., and Penn State Health Medical Group are partnering on a medical office building that is now under construction near the Millersville University campus. SLI, which is affiliated with Millersville University, started construction on the building over Winter Break.

The 11,000-square-foot medical office building on SLI property will be located just off Shenks Lane. It is scheduled to be completed by December 2023.

Geoffrey Beers, the CEO of Student Services, Inc. and SLI, says the project will allow Penn State Health Medical Group to move its current practice on Manor Avenue in Millersville to a new and more modern facility. "The project will provide walking distance access to the Penn State Health network of services. It will benefit both the Millersville Borough and Millersville University communities," says Beers.

The campus community should note that the parking area outside the construction fence is now reserved for vehicles with an SLI resident parking permit. There are signs indicating which lots are not available for open parking.

A reminder that the large parking lots, including the Prince Street Garage, the lower level of the Pucillo Garage and the Jefferson parking lot, are mostly vacant during peak commuter hours. And there is a free shuttle bus that stops at the parking lots, academic buildings and residence halls.